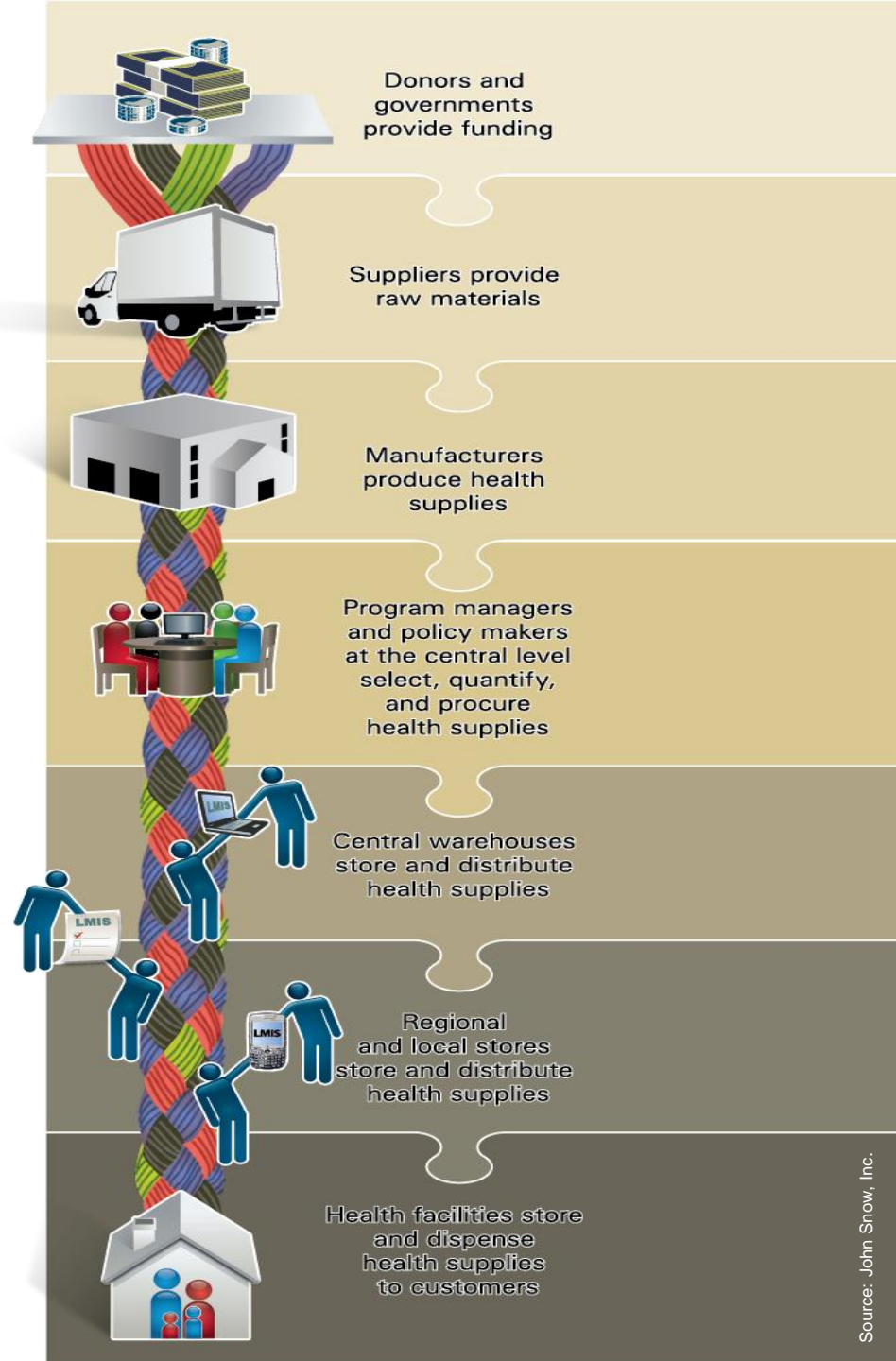


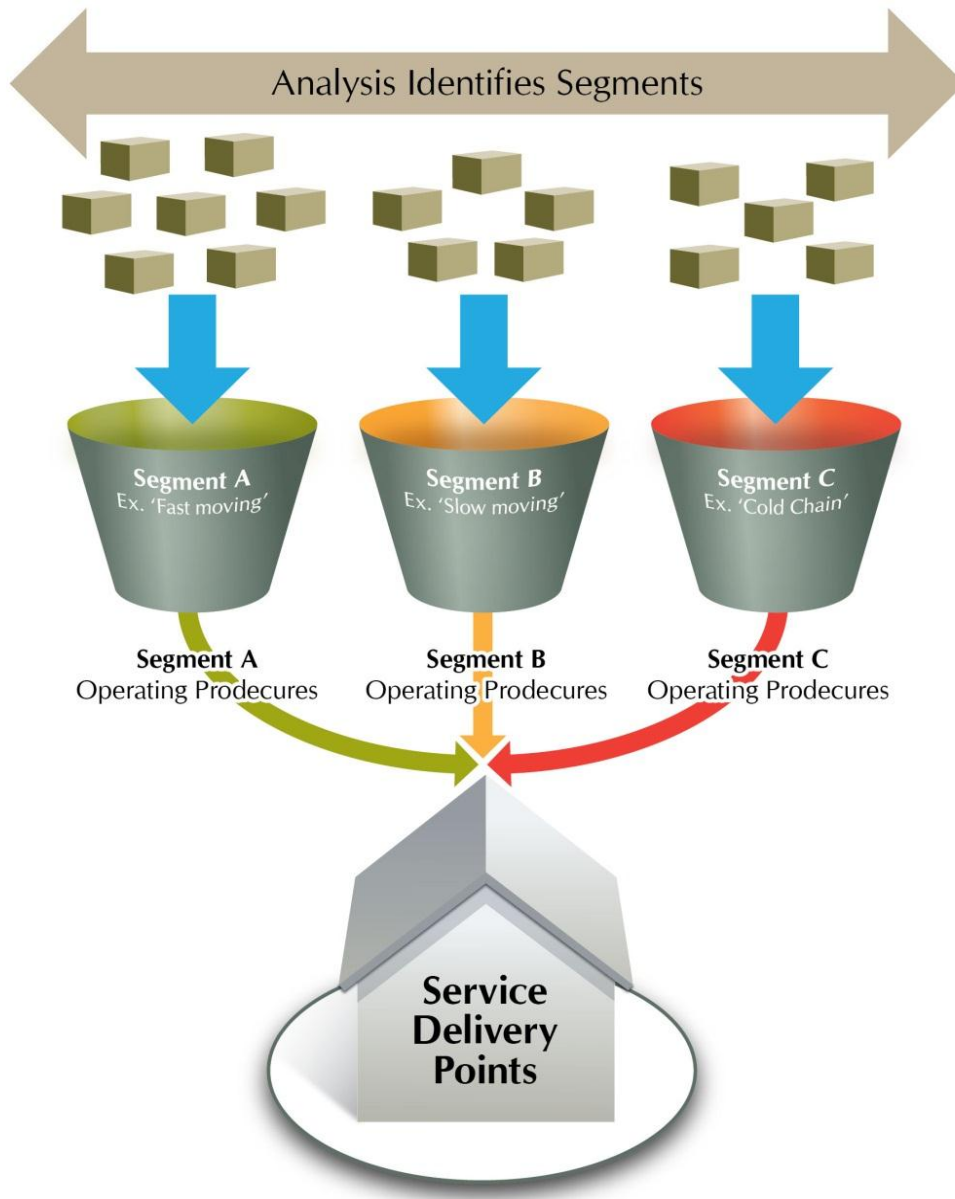
The integrated public health supply chain links all users, managers, suppliers, and funders from end to end.



Integrated supply chains demonstrate six key attributes:

- Clarity of roles and responsibilities
- Streamlined processes
- Visibility of logistics information
- Agility
- Trust and collaboration
- Alignment of objectives





Segmentation uses data to make rational decisions about how to run the supply chain –

whether to manage the logistics system for different programs' products and SDPs jointly or separately.